

The Advent Custodial Data[®] Advantage

Reconciliation Done Right

What is Advent Custodial Data?

PAGE 1

How It Works

PAGE 2

ACD Interfaces at a Glance

PAGE 3

Speedy. Secure. Simple. Automating your reconciliation process just makes good business sense.

What is Advent Custodial Data®?

A proven solution

SS&C Advent has been building and supporting custodian interfaces for more than 20 years and today we support hundreds of connections to more than 800 data sources. Each day, the experience and scale of Advent Custodial Data® (ACD) is leveraged by thousands of clients around the world.

Comprehensive, reliable, functionally robust

Today, ACD stands out as a comprehensive, reliable, and functionally robust custodial data aggregation service. ACD subscribers have access to account-level position and transaction information from hundreds of brokers and custodians.

ACD At-A-Glance

- Released in 1996
- 2,200+ clients
- 800+ data sources
- T+1 interface for activity, reconciliation, reporting
- 2.5+ million accounts daily
- 600+ million transactions transmitted annually

“ACD has greatly increased the efficiency of our reconciliation process. What used to take us two to three weeks can be done in a matter of days.”

Elizabeth Concepcion

Operations Manager, Chatham Investment Management Company

The Automation Advantage: ACD is the leading solution for fast, high quality data.

How It Works

Begin trading every day focused on your client relationships. Not managing data.

With ACD, speed, accuracy and simplicity redefine the previously frustrating and expensive task of managing multiple custodial relationships. By consolidating account data from different custodians through a single secure connection to SS&C Advent, ACD:

- Eliminates manual processes
- Increases efficiency
- Reduces expenses

ACD consolidates account level information from more than 800 sources for reconciliation and posting into the Black Diamond® Wealth Platform, AxyS® and Advent Portfolio Exchange® (APX). From there it is translated to the chosen solution's format and can be customized to match the way you do business. Data is trade-date based and is typically available before the market opens and is usually T+1.

Normalized data is as easy as 1-2-3

Each custodial interface includes trade-date based transactions, positions, income, and cash activity, and in many cases, security information, name and address information and other data of value. The secure ACD platform collects and consolidates this data each day from your custodians. From there it is ready for downloading and processing based on your schedule and workflow. For ACD clients, the simple, three-step process includes:



1-Download your data

A fast and secure process that takes seconds, not minutes



2-Translate and post

Advent's DataPort utility lets users choose what to import and automates the data translation



3-Reconcile

Run automated reconciliation reports to compare cash and securities positions

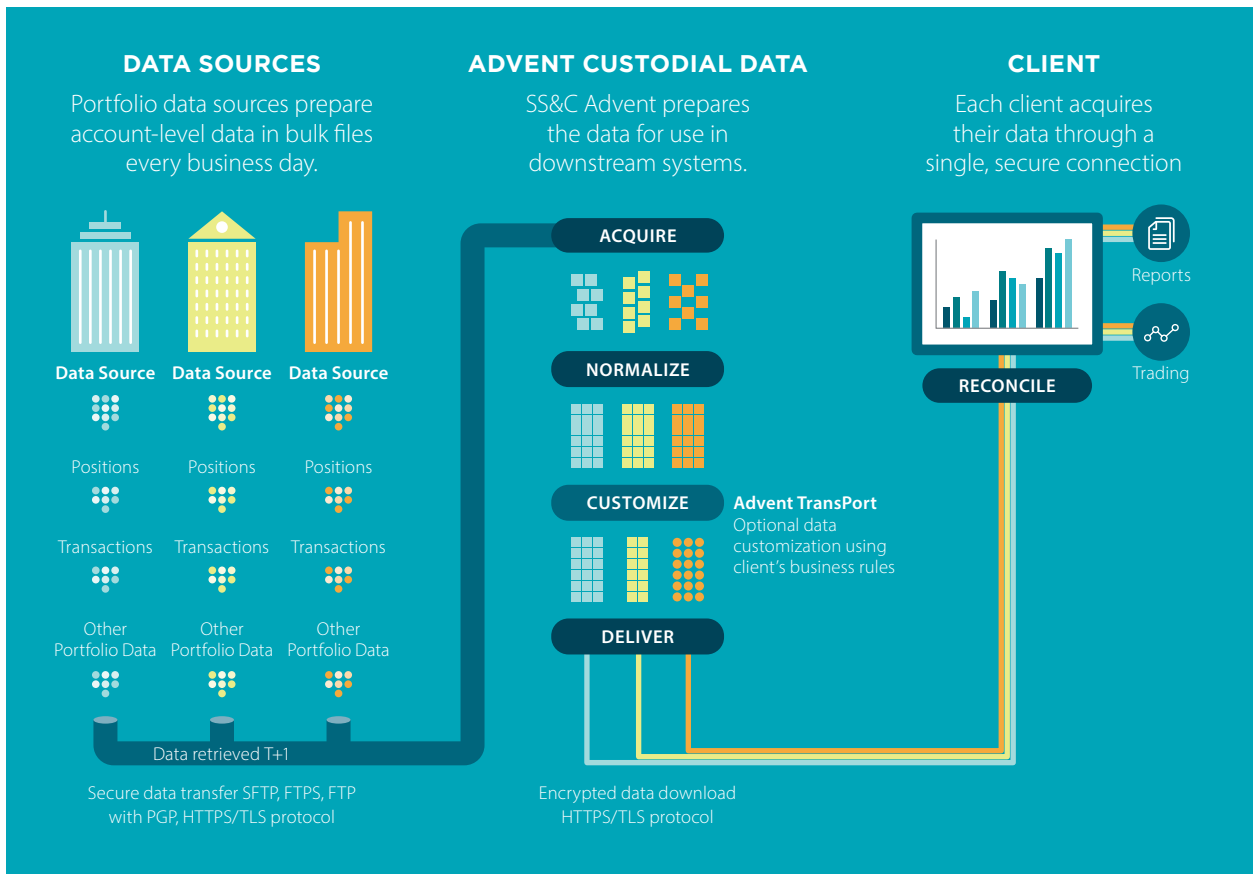
“With ACD, we’re handling over 40% more assets with the same number of people we had in portfolio accounting two years ago, and we’re doing it more quickly and with less settlement risk.”

Kenneth Cotner

Chief Operating Officer, Sterling Capital Management

ACD In Action: The ACD electronically collects, consolidates, and delivers custodial data.

ACD Interfaces at a Glance



A selection of ACD interfaces include:



JPMORGAN CHASE & CO.



A complete list of all of our current ACD interfaces can be found [here](#).

Meeting the many demands of your business

To learn more about SS&C Advent and the Advent Custodial Data® Advantage, visit advent.com, email info@advent.com, or call (800) 727-0605 today.

©2020 SS&C Technologies Holdings, Inc.

This communication is provided by SS&C Advent for informational purposes only and should not be construed as or relied on in lieu of, and does not constitute, legal advice on any matter whatsoever discussed herein. SS&C Advent shall have no liability in connection with this communication or any reliance thereon.

